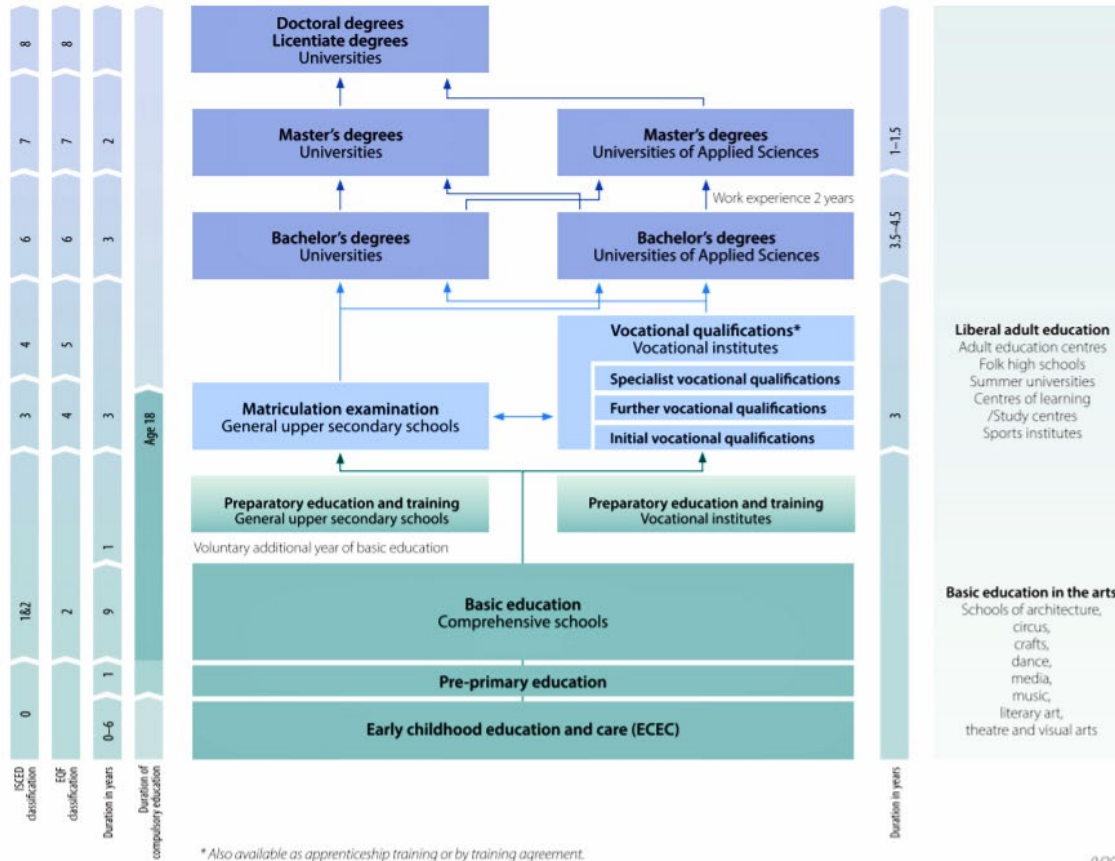


Education System in Finland

EDUCATION SYSTEM IN FINLAND



Kemi-Tornionlaakson Municipal Education and Training Consortium/ Lappia Vocational College and Lappia Education Ltd

We are one of Finland's largest developers of professional competence. About 3 400 students/
customers. Students' assessment of performance 4,5/ 5.

A strong local expert, the largest producer of labor in the region and developer of vitality

▶ **Ownerships**

- ▶ **8 Western Municipalities in Lapland–**
 - ▶ **Simo, Kemi, Keminmaa, Tervola, Tornio, Pello, Ylitornio ja Muonio**
- ▶ **Distance between the member municipalities Simo and Muonio about 320 kilometers**

▶ **Account Areas**

- ▶ **In Western Lapland about 69 000 Lappish**
- ▶ **In the Province of Lapland about 178 000 Lappish**

41 projects in progress and project portfolio of EUR 3,98 million and project- type subsidies and grants of EUR 1,56 million.

▶ **Competence Areas**

- ▶ **5 Competence Areas**
- ▶ **40 Vocational Qualification**
- ▶ **80 Preparatory Trainings for Competence-based Qualifications**
- ▶ **Apprenticeship Training provides unlimited number of educational opportunities**



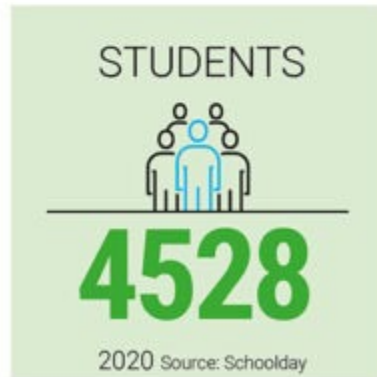
5 toimipistettä

30 %

SUOMEN
PINTA-ALASTA



Lappia Vocational College and Lappia Education Ltd



Northern vitality!

Kemi-Tornionlaakso Municipal Education and Training Consortium Lappia maintains the Lappia Vocational College and owns Lappia-Education Ltd development service company. There are about 4500 students in Lappia and about 340 employees.

The operating area of Lappia covers 30 per cent of Finland's surface area. We have offices in Kemi, in Loue in Tervola, in Muonio, Rovaniemi and Tornio. We also carry out various training courses elsewhere in Finland and serve customers across the border to Sweden and Norway. For companies and communities, we organise training opportunities according to their needs.

STRATEGY 2025

Operation Principle:

Lappia implements, improves and develops vocational education as well as supportive functions profitably, equally and purposefully. Lappia with all its employees are committed to function strongly in order to increase the vitality of the area.

Vision:

Lappia – Northern Vitality!

Value Promise:

Lappia holds each customer in the heart of functions in a genuine, responsible and caring manner – Strong Skills and Bold Modernization



Customer Promise:

Promise to students:

I shall guarantee and ensure qualified and relevant know-how to the students. Graduation, finding employment or a place to study further is the single most important aim for the student and I promise to support them at that.

Promise to working life and companies:

I shall actively and strongly function for the good of the welfare of the area and the growth of local companies.

Promise to colleagues:

I shall be collaborative, efficient, qualified, competent and innovative.



Rural Entrepreneurship Expertise Center, Tervola, Loue



AMMATTI
LOUE
TOIMIT
TOIMIT
TOIMIT
ETUNIM

Rural Entrepreneurship Expertise Center, Tervola, Loue

AMMATTIOPISTO LAMMI

LOUEN TOIMIK

TOIMIPAIKKA

TOIMIVASTAAVA

TOIMIPAIKKA

ETUNIMI SUKUN



Loues field of study

Vocational Qualification in Agriculture (3 years, of which 6 months in working life)

- **Rural entrepreneur**
- **Animal care**

Vocational Qualification in Forestry (3 years, of which 6 months in working life)

- **Producer of forest services**

Vocational Qualification in Horticulture (3 years, of which 6 months in working life)

- **Gardener**

Further Vocational Qualification in Animal Care

- **Competence area of Animal Grooming**
- **Competence area of Animal Training**
- **Competence area of Dog Massage**

Further Vocational Qualification in Forestry

Further Vocational Qualification for Entrepreneurs (Agriculture)

Further Vocational Qualification in Nature –based Services

Animal transporting lisenca training



Love unit and Business cooperation: Further processing of meat

Meän Liha Ltd “From the Northern Fields –of Our Farms”

- Production facilities are located in Vocational College Lappia Loue unit, which make the Job –learning education and training cooperation possible
- Part of the Educational Farm cows are slaughtered in Leiverivers Slaughter house, after that the cows are cut in Meän Liha Ltd. We eat local food in the kitchen of our school in Loue, Kemi and Tornio.



Love unit and Business cooperation: Further processing of milk

Arctic Icecream Factory Ltd

- Leipomotilan saneeraus tuotantotiloiksi, maito koulun navetalta 60 - 100 litraa/ päivä 3 x viikossa
- Noin 40 eri makua, marjat Lapista. Uutena tuotteena Keto -jäätelö.



Loue unit and Business cooperation: Treatment of Wool

Pirtin Kehräämö Ltd

- Sorting, pricing and packaging of Wool
- Reception point is open 2 months in Spring and 2 months in autumn
- Training for sheep keepers all year round



Love unit and Business cooperation: Special plants

Aromtech Ltd 3 700 pcs Sea Buckthorn bushes (76 x 270 m, 2ha)



Love unit and Business cooperation: Special plants

Aromtech Ltd 3 700 pcs Sea Buckthorn bushes (76 x 270 m, 2ha),



Love unit and Business cooperation: Special plants

The Hob Garden 657 hob vines: 17 different varieties

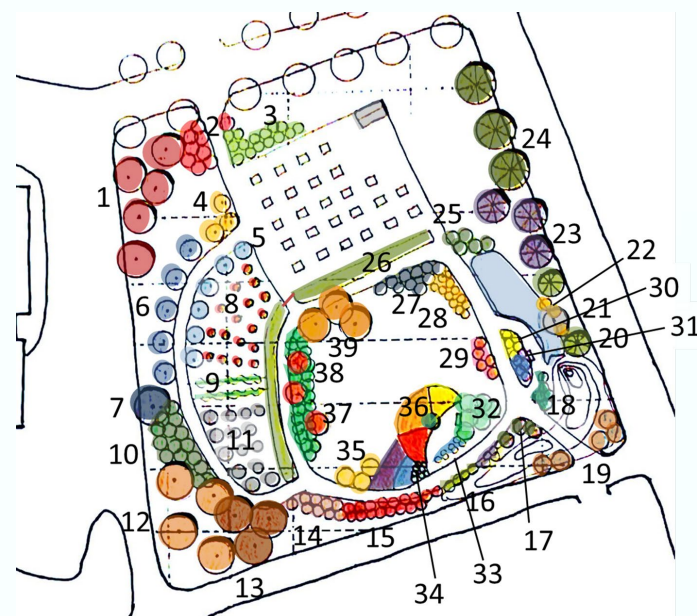
Tornion Panimo Ltd (Tornio Brewery) and Natural Resources Center (Luke)



Loue`s Learning environments in the Agricultural and Forestry sectors



Loe`s Gardening Learning environments



Loue`s EU -projects

- Managed by Lappia:

- Nature scene: -Forest, horticultural and animal learning environments development and investment project (Lapland Federation EAKR), Luke as project partner
- Year-round urban farming and local food production in The Town of Kemi investment project (hydroponics equipment), (Lapland Federation EAKR)
- More sustainable Local Food production in Lappia in the Arctic Business Ecosystem

Lappia as a project partner:

- Hop up, Starting Finnish Hop Production, Luke as Administrator, (Ely Centre EAKR)
- Year-round urban farming and local food production in Kemi development project, City of Kemi as administrator (Lapland Federation EAKR)
- The possibilities of lapland's cow-based specialisation as part of northern livelihoods, University of Lapland Arctic Centre as administrator. Luke as the second installer. (Lapland Federation EAKR)

Lappia has provided an operating platform from the test field:

- Arctic nettle Luke as administrator, Lapland University of Applied Sciences as partner. (Ely Centre EAKR). Lappia invoice for the field work and plant work and the rent of the Greenhouse.

Projects Applications that haven`t yet received a financing decision
Lapland information project

- More Organic in



| www.lappia.fi

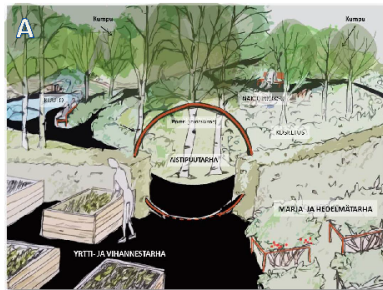
Arctic Healing Garden – Project involves the Maintenance of a Genebank for Horticultural plants of Arctic Origin

Louen arboretumin yleissuunnitelma

4. lokakuuta 2017 Marja Uusitalo



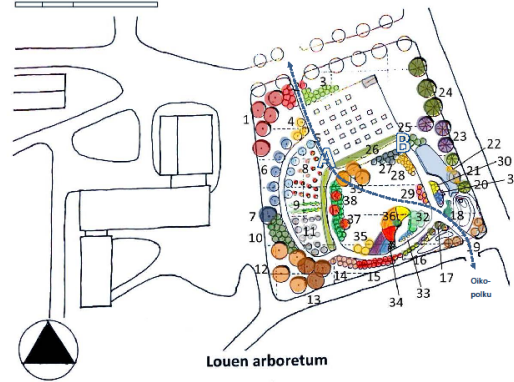
Arboretum palvelee ensisijaisesti Louen maatalousoppilaitoksen puutarha-, luonnontuote- ja hyvinvointialojen (Green Care) opetusta. Sen lisäksi alue toimii pohjoisten kasvien geenivarakokoelmana (pääasiassa koristekasvit, herukat ja tyrnit). Arboretum muodostuu viidestä osa-alueesta: 1) geenivarausto, 2) yrtti- ja vihannestarha, 3) marja- ja hedelmätarha, 4) aistipuutarha ja 5) niitty (tuore niitty ja ketokumpu).



Aistipuutarha toimii ympäristönä, jossa voidaan opettaa ja testata Green Care –toimintaa. Puutarha on jaettu osiin, jotka herkistävät eri aisteja. Puutarha on rajattu leikkavalla pensas-aidalla viljelyleuista sekä vapaasti kasvavilla pensas- ja puuistutuksilla tealueista.

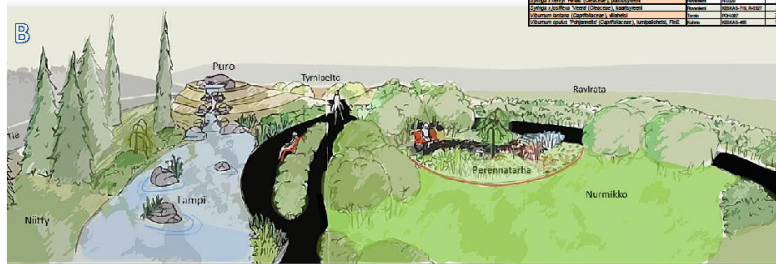
Arboretumin kasvilajit

0 10 20 m



Louen arboretum
Yleissuunnitelma

Nro	Kasvi	Arkkitehti	Arkkitehti	Arkkitehti
1	Alnus	Alnus	Alnus	Alnus
2	Alnus	Alnus	Alnus	Alnus
3	Alnus	Alnus	Alnus	Alnus
4	Alnus	Alnus	Alnus	Alnus
5	Alnus	Alnus	Alnus	Alnus
6	Alnus	Alnus	Alnus	Alnus
7	Alnus	Alnus	Alnus	Alnus
8	Alnus	Alnus	Alnus	Alnus
9	Alnus	Alnus	Alnus	Alnus
10	Alnus	Alnus	Alnus	Alnus
11	Alnus	Alnus	Alnus	Alnus
12	Alnus	Alnus	Alnus	Alnus
13	Alnus	Alnus	Alnus	Alnus
14	Alnus	Alnus	Alnus	Alnus
15	Alnus	Alnus	Alnus	Alnus
16	Alnus	Alnus	Alnus	Alnus
17	Alnus	Alnus	Alnus	Alnus
18	Alnus	Alnus	Alnus	Alnus
19	Alnus	Alnus	Alnus	Alnus
20	Alnus	Alnus	Alnus	Alnus
21	Alnus	Alnus	Alnus	Alnus
22	Alnus	Alnus	Alnus	Alnus
23	Alnus	Alnus	Alnus	Alnus
24	Alnus	Alnus	Alnus	Alnus
25	Alnus	Alnus	Alnus	Alnus
26	Alnus	Alnus	Alnus	Alnus
27	Alnus	Alnus	Alnus	Alnus
28	Alnus	Alnus	Alnus	Alnus
29	Alnus	Alnus	Alnus	Alnus
30	Alnus	Alnus	Alnus	Alnus
31	Alnus	Alnus	Alnus	Alnus



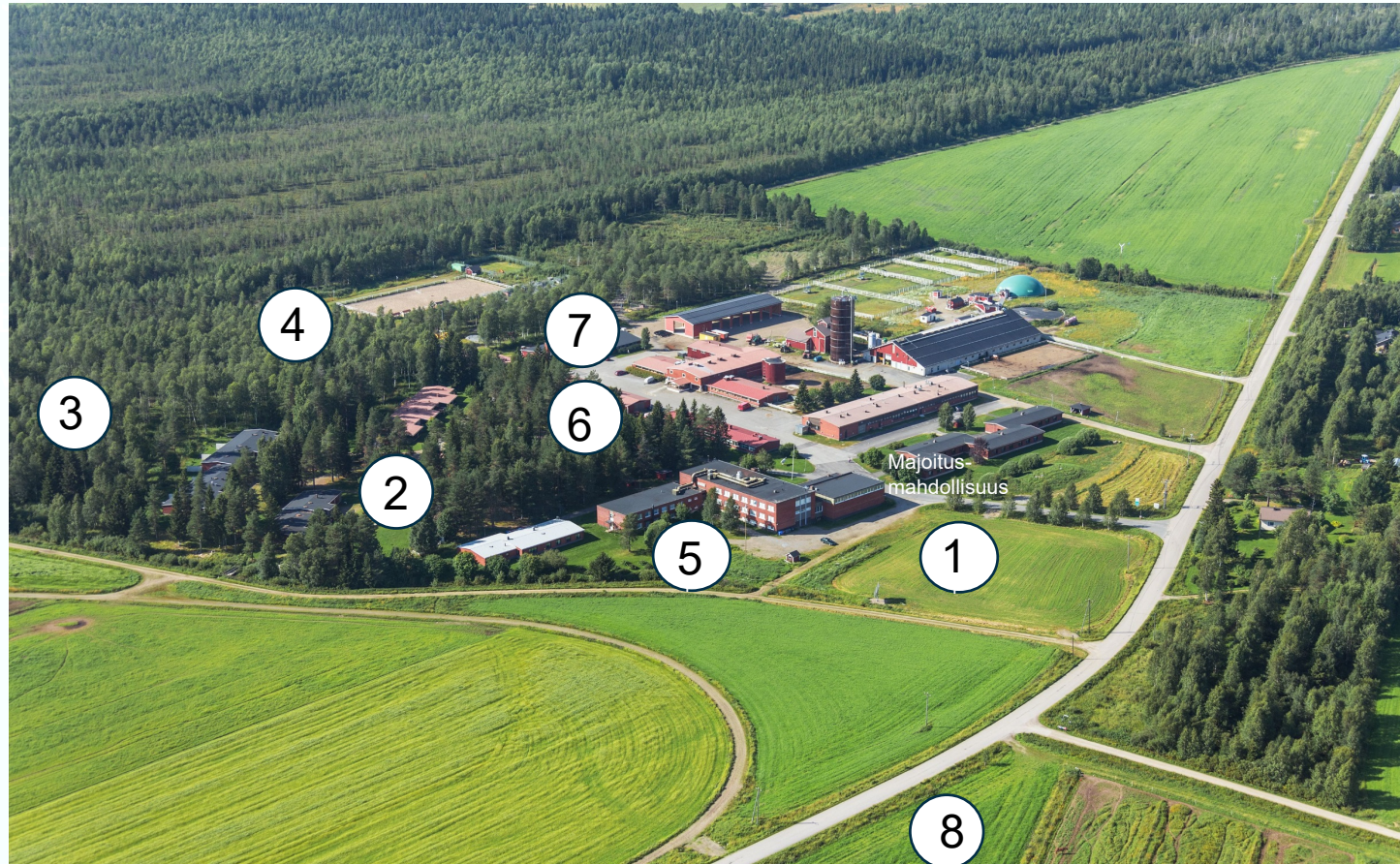
Aistipuutarhan alueelle on rakennettu kumpu ja lammikko, johon johtaa pieni puro äänimaiseman elävöittämiseksi. Perennatarhaan valitaan kasvit kukkien värien perusteella. Värit ryhmitellään väriympyräksi. Perennatarha rajataan reunuksen avulla nurmikkoalueesta. Alueella on kaksi penkkiä.



Nature scene: -Forest, horticultural and animal learning environments development and investment project/ Lappia and Luke

The natural environments has been found to have a positive effects of physical, mental and social well-being and health of the human being. Green Care can be practiced in all kind of environments where nature is somehow present: farm, forest and garden.

Working in nature, with nature or for nature can at best increase effectiveness of a care, nursing or learning situation.



LOUEN UUDET LUONTO-, PUUTARHA- JA ELÄINAIHEISET OPPIMISYMPÄRISTÖT

1. Hoitava puutarha, Healing Garden
2. Kotieläinpiha
3. Pakurimetsä+pitkospuut
4. Laavu ja lapinlehmä tai lammasaita
5. Mehiläistarhaus 10 pesää
6. Metsähuone
7. Pieneläinhuone
8. Humalatarha

Loue`s unit and cooperation with Research institutes

Natural Resources Institute Finland (Luke)

The cooperation agreement signed between Luke and Lappia in 2017 is a mutually beneficial partnership model. Lappia Loue`s unit offers excellent conditions for project activities and agricultural field trials.

In addition to agriculture, Loue has training in the horticultural sector and development activities related to further food processing. Luke's expertise can be utilised in Loue's vocational education and development projects.

Research data can be transferred immediately to students (Agri Hub).

The agreement on field trials of Lapland's grassland and research and customer projects with Lapland has been signed and the agreement is valid from 1 January 2021.

Agreement on the acquisition of genetic resource activities under the National Genetic Resources Programme on 30 March 2021 (Lapland Cows, Finnish Sheep and Kainuu Grey Sheep).

Strong project cooperation



Loe`s unit and cooperation with Research Institutes

Field testing of plant production (hay)



Cooperation with Lapland University of Applied Sciences

Possibility of completing fairway studies for Vocational College Lappia students in the field of agriculture.

Practical farm and machine handling exercises for agrology students and training grass harvesting and preservation. Students management training.

Project and thesis for the Loue`s teaching farm.

Loue's teacher teaches agrology students in Rovaniemi how to use Visu software (cultivation plan).

Lapland University of Applied Sciences participates in the development working group in designing a centre of expertise in the agricultural sector in Loue (Lappia, Pro Agria, Luke, MTK, University of Lapland).

Strong project cooperation.

Cooperation with Oulu University of Applied Sciences

Theses, training of agrology students.



Cooperation with the Arctic Centre of the University of Lapland

- Strong project cooperation.
- How specialization of products and services based on the Lapland Cattle can contribute to Northern livelihoods –project, where Lappia and Luke are partners.
- University of Lapland participates in the development working group in designing a centre of expertise in the agricultural sector in Loue (Lappia, Pro Agria, Luke, MTK, University of Applied Sciences).

AMMATTIOPISTO LAPPIA
Omaa luokkaansa

LAPLAND COWS AND FINNISH SHEEP AND KAINUUN GREY SHEEP



- 225 Finnish sheep ja 10-15 Finnish sheep ram and 25 Kainuun gray sheep and - 5-10 Kainuun gray sheep ram
- 65 lapland cows + 80 young cattle, together 145 + 2-3 lapland cows bulls
- Transfer by 31.8.2022
- The house for the sheep is ready in week 27 and barn renovation is ready in week 33

Loue Facilities 2022-

1_ARK_Asemakuva_Louen koulu: x +

C:/Users/jsaarini/OneDrive%20-%20Ammattiopisto%20Lappia/Tiedostot/Tiedostot/Tiedostot/AA%20Louen%20toimipai...

Sivunäkymä | Lue ääneen | Lisää teksti | Piirrä | Korostus | Tyhjennä

KÄYÄVA

PUMPPAAMO
PAINENKOROTUSASEMA

ABUUTOLA D

LEIKINTASALI

PÄÄRAKENNUS

TALVILAUDUN
x 6500 m²

ATEA

BIOKAASUTUS-REAKTORI

LITERSÄILO

BIOVOMALA

OPETUSTYÖPAJA

AIV-TORNI

KOKKITALO

UUNI LAMPOLA

PÄÄRAKENNUS

TALLI

AIKOKALAS

SOIKI

AUTOKAATOS

PÄÄRAKENNUS

SIKOPALLO

KÄYÄVA

KOKKITALO

TIIVISTYS

KÄYÄVA

WINNISIISREITTI

Kirjoita tähän hakeaksesi kohteista

14.48
19.12.2021

Rural Entrepreneurship Expertise Centre Tervola, Loue

In three years' time, Loue will be the centre for education, business toplining, research, advice and rural project activities.



Thank You!

**Jarmo Saariniemi, Tel.+358400 337 169, E-mail
jarmo.saariniemi@lappia.fi**



AMMATTIOPISTO
LAPPIA
Omaa luokkaansa

www.lappia.fi